



Installation instructions
Valve Control 2
Audi S3 / RS3 8V

Start situation:



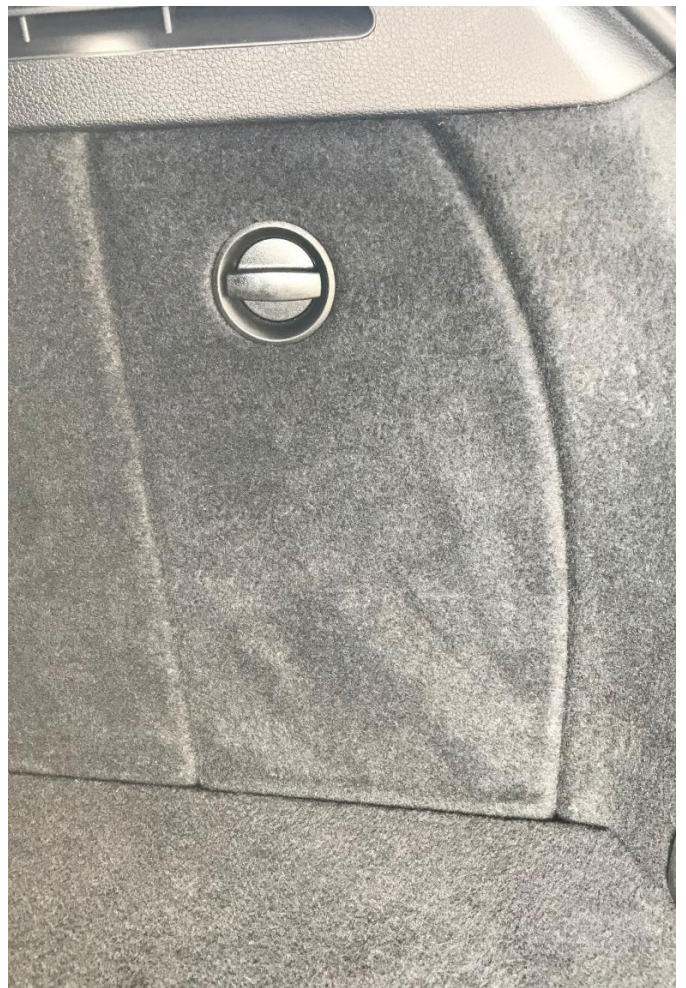
Remove boot floor:



Remove the foam pieces around the spare wheel:



Open the side panel left and right:



Pass left and right the cable of the control system under the side panel through:



On the left and right are each two ways to pass the cables of the control system down, either the silver covers or the black rubber grommet. Modify it fitting for the cable and pass the cable through.:



Disconnect the original plug from the servo motor and connect it with the matching plug of the control system.
Then connect the second plug of the control system with the servo motor:



For vehicles with a servo motor left + right both Y-cable can be installed left or right, this has no influence on the function of the controller.

The cable of the control system are designed that the control system normally can be placed in the foam or in the area of the battery:





Owner: Christian Müller

Vorstadt 15

94577 Winzer

Germany

Telephone: +49 (0) 9901 200981

Fax: +49 (0) 9901 200983

info@special-exhaust.de

www.special-exhaust.de