



Installation instructions
Valve Control 2
Audi RS Q3

First remove the trunk floor:



Then take the Styrofoam tray out:



Centered below the bumper cover is the grommet:



Pull the bumper protection up away to get better at the cable gland.



Tighten the cable bushing from the body and expand the hole where appropriate (eg with a cutter).
Now run Carefully plug the controller through and stuck plugging the cable gland back into the body.



Attach the cable of the control cable ties to the serial cable:

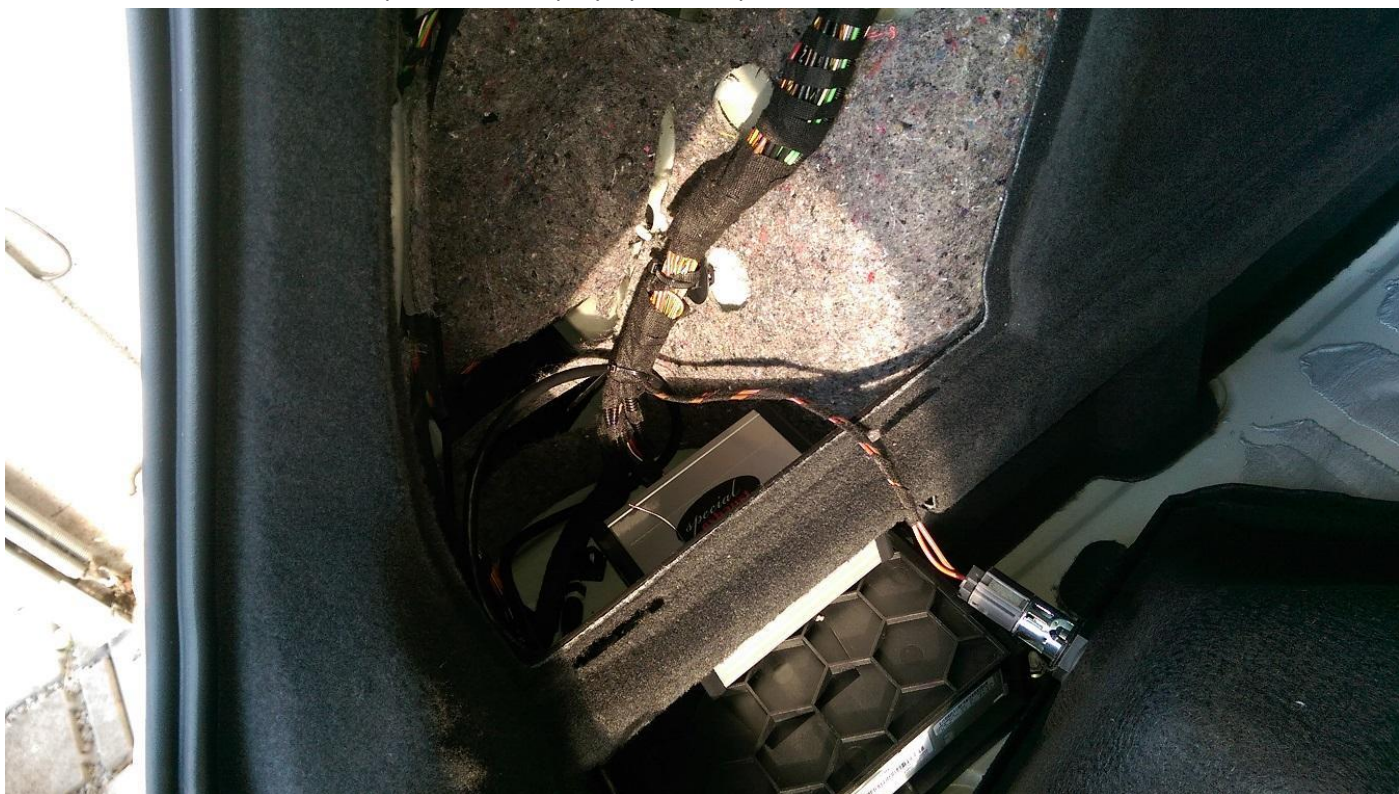


Pull the serial connector on the actuator motor off, connect the serial connector to the appropriate mating connector of the control and insert the second plug the controller to the actuator.

Fix if necessary to see the connectors with cable ties as in this example:



The control itself can be well deposited in the polystyrene tray or behind the side trim:



If necessary seal the cable entry with silicone sealant, and then remount the bumper cover:



Now test the controller with the engine running to your function.



A = Sport-Mode
the exhaust flap is permanently opened.

B = Comfort-Mode
the exhaust flap is permanently closed

D = Original-Mode
the exhaust flap is controlled by the ECU



Owner: Christian Müller

Vorstadt 15

94577 Winzer

Telephone: +49 (0) 9901 200981

Fax: +49 (0) 9901 200983

info@special-exhaust.de

www.special-exhaust.de